

Elevating expectations in surgery.

Specifications

	Product No.	Shaft Length	Shaft Diameter	Jaw Length	Jaw Design
CoolSeal Reveal	CSL-RV105-10	10 cm	5 mm	12 mm	Maryland
CoolSeal Generator	CSL-200-50	—	—	—	—
CoolSeal Trinity	CSL-TR105-30	30 cm	5 mm	20 mm	Maryland
	CSL-TR105-37	37 cm	5 mm	20 mm	Maryland
	CSL-TR105-44	44 cm	5 mm	20 mm	Maryland
CoolSeal Mini	CSL-MN103-20	20 cm	3 mm	10 mm	Maryland

Contact your Hologic representative or visit us at <https://gynsurgicalsolutions.com/hcp/AESS> for more information or to schedule a demonstration of the CoolSeal portfolio.

References

- ¹ Internal Report 16375_2
- ² Internal Report BOLD-2001 Critical structures tested include bowel and vasculature.
- ³ Internal Report 16339_1
- ⁴ Internal Report 16451_1
- ⁵ Internal Report 16504_1

Important Safety Information

The CoolSeal® Reveal open sealer/divider/dissector is a bipolar electro-surgical instrument intended for use in open surgical procedures in adults and pediatrics where ligation and division of vessels, tissue bundles, and lymphatics is desired. The CoolSeal® Reveal open sealer/divider/dissector can be used on vessels (arteries and veins) up to and including 6 mm in diameter. It is indicated for use in general surgery and in such surgical specialties as urologic, thoracic, plastic, and reconstructive. Procedures may include but are not limited to, bowel resections, gall bladder procedures, Nissen fundoplication, and adhesiolysis. The CoolSeal® Reveal open sealer/divider/dissector is also indicated for open ENT procedures in adults (thyroidectomy, radical neck dissection, and parotidectomy) for ligation and division of vessels, lymphatics and tissue bundles 2-3 mm away from unintended thermally-sensitive structures such as nerves and parathyroid glands. Do not use the CoolSeal® Reveal open sealer/divider/dissector for tubal sterilization or tubal coagulation for sterilization procedures. For further information related to warnings, cautions, and directions for use, please consult the Instructions For Use.

30086/C © 2022 Hologic, Inc. All Rights Reserved. Hologic, CoolSeal, The Science of Sure and associated logos are trademarks and/or registered trademarks of Hologic, Inc. and/or its subsidiaries in the United States and/or other countries. All CoolSeal products are manufactured by Bolder Surgical, LLC, a subsidiary of Hologic, Inc.

Vessel Sealing Reinvented



Maximize visibility in tight spaces while minimizing the thermal footprint near critical structures.¹

The CoolSeal Reveal open sealer/divider/dissector is an innovative surgical device tailor-made for procedures where space is limited, and visibility of the surgical field is essential. It combines precision and safety, using gold standard advanced bipolar RF technology to deliver a minimal thermal footprint where it matters most.¹

Fine Jaws

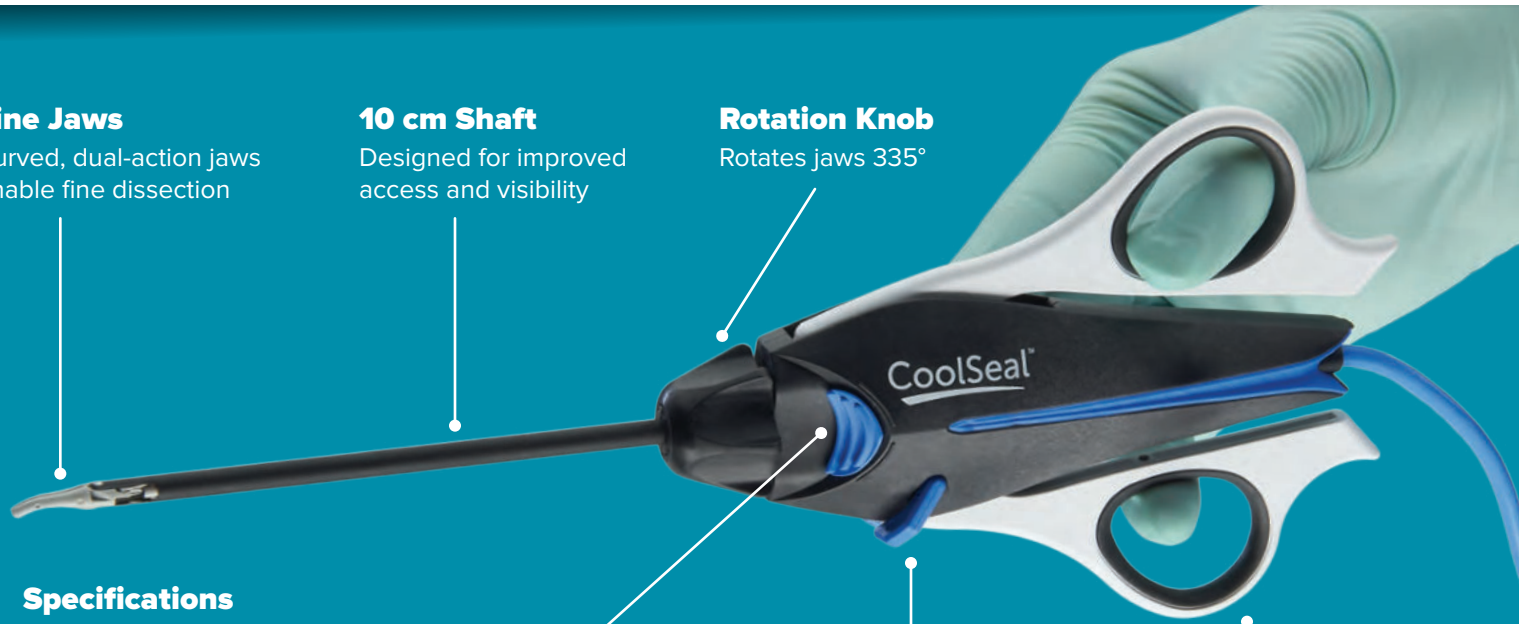
Curved, dual-action jaws enable fine dissection

10 cm Shaft

Designed for improved access and visibility

Rotation Knob

Rotates jaws 335°



Specifications

Jaw Length	12 mm
Seal Length	11 mm
Cut Length	10 mm

Activation Button

Initiates sealing, average seal time < 1 sec⁴

Cutting Trigger

Enables division of tissue

Levers

Ergonomic inline hemostat design

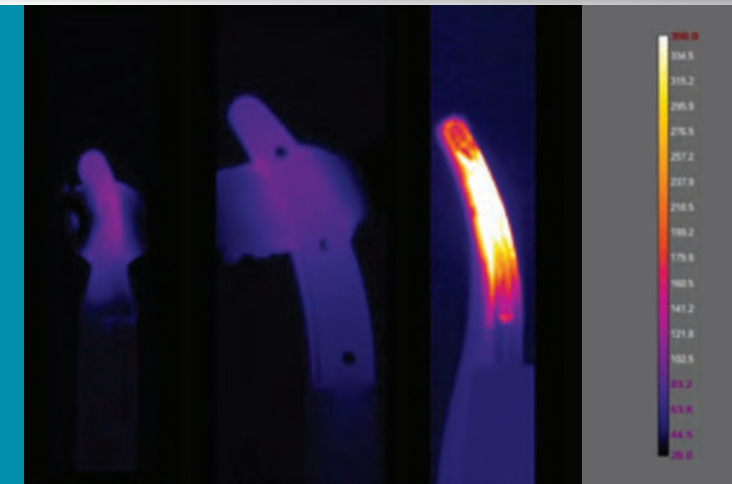
Tailor-made for precision in tight spaces

- Shafted design and fine jaws maximize access and visibility
- Slim, dual-action curved jaws enable fine dissection
- Dissection capability designed to reduce instrument exchanges that can slow procedures
- 10 cm shaft ideal for deep dissection

Low thermal footprint

- Jaws produce minimal thermal spread¹
- Avoids damage to adjacent critical structures*²
- Strong, reliable seals in <1 second on average^{3,4}

* Critical structures include bowel and vasculature



CoolSeal Reveal LigaSure Exact Harmonic Focus Temperature Scale (°C)

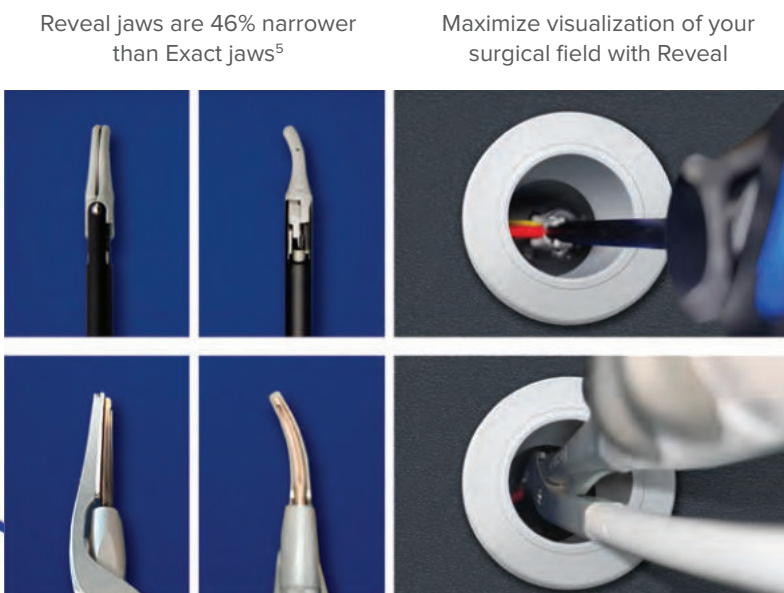
Thermal profile after one activation.



CoolSeal Energy Delivery

- The CoolSeal generator performs with the gold-standard efficacy of advanced bipolar RF vessel sealing technology.
- Delivers precisely the power needed, and automatically discontinues power when the seal is complete.

Maximize visualization and access with a shafted design and fine, dual-action jaws.



Reveal jaws are 46% narrower than Exact jaws⁵

Maximize visualization of your surgical field with Reveal