



## **Colposcopes from ZEISS**

Enabling enhanced diagnostics



We make it visible.



# Early detection with ZEISS colposcopes

Reliability for your patients



*ZEISS Kolposkop 150 FC*



*ZEISS Kolposkop E*



*ZEISS Kolposkop 150 FC  
with optionally integrated 1Chip HD Camera*

## Why should you choose a ZEISS colposcope?

### High-quality optics

facilitate the assessment of anomalies in the epithelium and therefore also enable differential diagnosis.

### High-performance illumination

allows you to clearly recognize color differences in the epithelium and visualize tissue patterns.

### Swing-in red-free filter

enhances the contrast of the colposcope image.

### Different magnification settings

offer a general overview at a low power and clear recognition of detail at high powers.

### Straight, inclined or tiltable tube

enables ergonomically correct viewing conditions.

### Large focusing, inclination and tilt ranges,

in addition to the variable height adjustment of the suspension arm and an ergonomically convenient handgrip, allow fast and reliable positioning of the colposcope.

### Selectable working distance

with objective lenses featuring different focal lengths.

### Ideal for digital documentation and patient consultation

with an optionally available video camera, video recorder or adapter for digital cameras.

### Attachment to examination chair or floor stand

for stationary or mobile use.



# ZEISS Kolposkop 150 FC

## High-quality optics

The versatile colposcope meets the critical demands made on a top-class colposcope:

- High-intensity fiber optic illumination, via integrated light guide
- Convenient, single-hand operation using the ergonomically arranged controls
- Large fine focusing range
- 5-step magnification changer
- Wide-field optics for a large field of view



You can choose the combination best suited for your requirements:

- Attachable to suspension mount / examination chair or floor stand
- Straight or inclined binocular tube for convenience and comfort

- Optionally integrated 1Chip HD Camera for documentation of findings and patient consultation



Performance features of the colposcope KSK 150 FC from ZEISS	
<b>Illumination</b>	12 V / 10 W cold light, fiber optic illumination, adjustable
<b>Objective lens</b>	300 mm focusable or 250 mm focusable
<b>Magnification</b>	Manual magnification changer with five settings
<b>Total magnification</b>	3.5x–21.5x (at working distance 250 mm, 12.5x eyepieces)
<b>Fine focusing</b>	18 mm
<b>Viewing tube</b>	Inclined binocular tube, 45° or Straight, inclined, 180° tiltable binocular tube
<b>Red-free filter</b>	Swing-in
<b>Suspension mount</b>	Rolling floor stand or Suspension mount (connecting tube for examination chair)
<b>Video camera (option)</b>	Integrated 1Chip HD Camera, 1CMOS 1080p, DVI, HD-SDI, S-Video

# ZEISS Kolposkop E

Details that count

ZEISS Kolposkop E offers the features you need for use in routine colposcopy:

- Attractive price
- Ease of use and flexibility
- High optical quality

Various configurations allow the ZEISS Kolposkop E to be tailored to the requirements of your office:

- Attachable to suspension mount/ examination chair or floor stand
- Straight or inclined binocular tubes
- Fixed magnification or with 3-step magnification changer



## Performance features of Kolposkop E from ZEISS

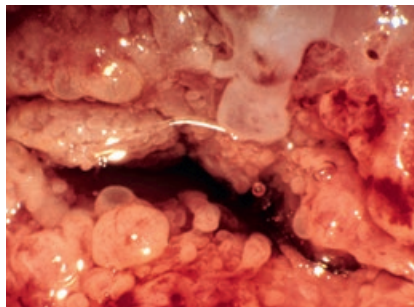
<b>Illumination</b>	6 V / 15 W halogen illumination
<b>Working distance</b>	300 mm
<b>Magnification</b>	3x / 5x / 8x with 3-step changer or 5x
<b>Viewing tube</b>	Inclined binocular tube or Straight binocular tube
<b>Red-free filter</b>	Swing-in Green filter, type VG6, operable from both sides
<b>Suspension mount</b>	Rolling floor stand or Suspension mount (connecting tube for examination chair)

# Seeing and identifying

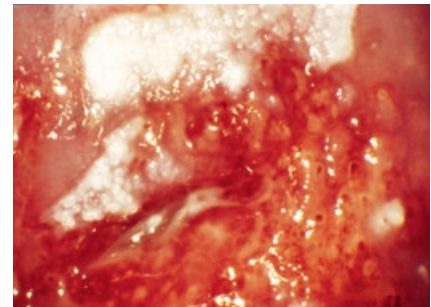
## Impressive outcomes

Both skill and high-quality optics are needed to recognize precancerous changes.

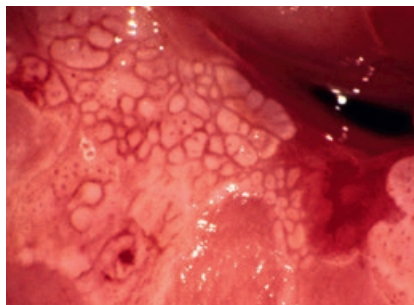
ZEISS has been developing and producing world-class optical designs for over 160 years and makes the world visible when the naked eye is not enough.



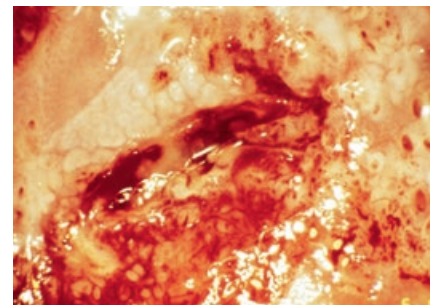
*Central polypoid ectopia*



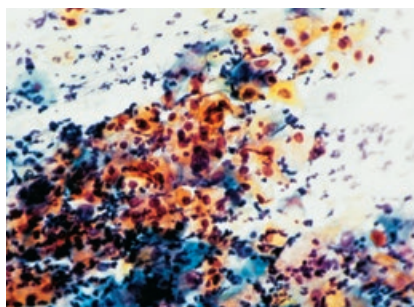
*Colposcopy: Rough leukoplakia of the anterior lip, vulnerable, vascular transformation zone on the posterior lip*



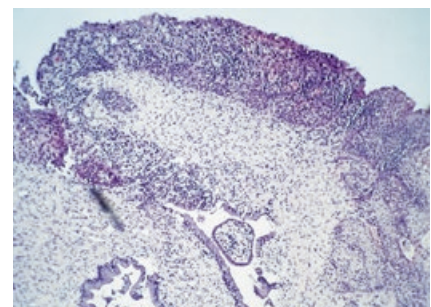
*Abnormal portio with mosaic and punctuation*



*After the application of acetic acid: aceto-white, hollow-like mosaic on the anterior lip; vulnerable, vascular transformation zone on the posterior lip*



*Cytology: Signs of keratinization with dyskeratosis of all layers. Suspected CIN III, Pap IVA*



*Histology: CIN III*

*Application photos:*

*Dr. Peter Schomann, Lüneburg, Germany*

# Powerful accessories

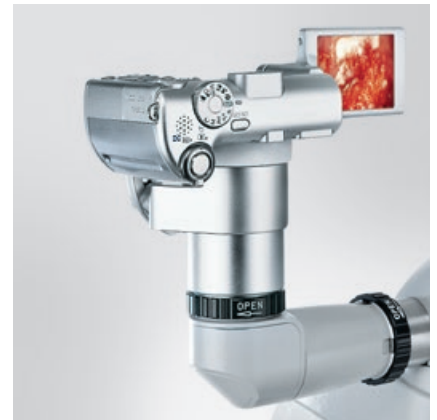
For visualization and effective documentation of your work

## Digital visualization

The integrated video camera on the ZEISS Kolposkop 150 FC allows you to visualize your colposcope image in state-of-the-art, full-HD picture quality. This enables you to display relevant tissue structures in a finer detail when in comparison with standard definition cameras. The live image display on the monitor can be used for explanation and patient consultation. High contrast and ideal image definition are ensured through the built-in ZEISS video optics. The camera starts with a specialized, pre-defined configuration for colposcopy and is therefore instantly ready to use with the colposcope.



Digital visualization: 1Chip HD Camera



Digital photography: FlexioStill & FlexioMotion

## Video and photo documentation

Combining the integrated video camera with the HD video recorder allows you to digitally save your high-quality colposcope images. You can choose between photo and video storage. Also, you are able to select USB storage or configure the recorder to directly transmit your image data to a network storage system.



Documentation: MEDIALINK® 100 or HD recorder

## Digital photography

It is also optionally possible to attach digital cameras to the colposcope. ZEISS can provide you with variable camera adapters such as the FlexioStill™ and FlexioMotion™.



Laser attachment

## Chair attachment

Using an appropriate mount, both colposcopes can be attached to examination chairs from different manufacturers. Mounts for attaching connecting tubes to examination chairs are available from the respective chair manufacturer.

## Laser attachment

An external micromanipulator can be directly attached to ZEISS Kolposkop 150 FC to perform CO<sub>2</sub> laser therapies.

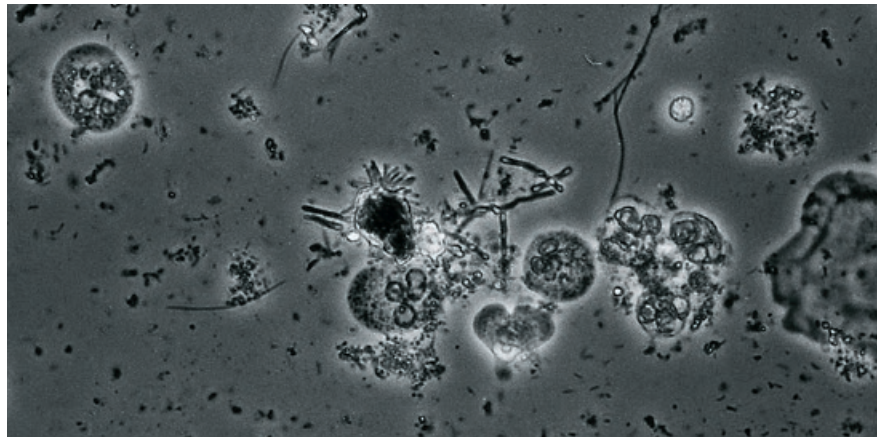






# Light microscopes from ZEISS

Make the examination complete



The early diagnosis of abnormalities of the Cervix uteri are ideally rounded off by cytological findings. The native smear is also an integral part of the patient examination: it allows fast diagnosis and hence facilitates therapy of inflammatory processes.

ZEISS light microscopes offer benefits for use in gynecology:

- High-quality optics
- Ease of use and flexibility
- Upgradeable for advanced fluorescence techniques

*Light microscope manufactured  
by Carl Zeiss Microscopy GmbH.*

# ZEISS OPMI pico

For routine and more intricate procedures

OPMI® pico from ZEISS is a compact, high-performance, easy-to-use surgical microscope.

- High-intensity fiber optic illumination
- Ergonomic arrangement of all controls
- Objective lens with fine focusing
- 5-step magnification changer
- Widefield optics
- Very mobile floor stand with four easy-to-move, lockable casters
- Suitable as SAD (Sexual Assault Documentation)

ZEISS OPMI pico is available in various configurations:

- Straight or inclined binocular tube for excellent ergonomics
- You can choose between three integrated HD video camera versions: HD-ready 720p, Full HD 1080p or live & streaming (Full HD 1080p) with recording license.



## Performance features of S100 / OPMI pico from ZEISS

<b>Illumination</b>	Halogen lighting or LED lighting
<b>Objective lens</b>	300 mm, focusable or 250 mm, focusable or Varioskop® 100, focusable working distance 200–300 mm
<b>Magnification</b>	Manual magnification changer with five settings
<b>Viewing tube</b>	Straight binocular tube, f=170 mm or 45° inclined binocular tube or 180° swiveling binocular tube
<b>Red-free filter</b>	Swing-in
<b>S 100 Suspension mount</b>	Floor stand or Wall mount or Ceiling mount
<b>Integrated HD video camera (option)</b>	HD-ready 720p or Full HD 1080p or Live & streaming (Full HD 1080p) with recording license

The moment medical technology leads  
to something very human: patients smile again.  
**This is the moment we work for.**

// CONFIDENCE  
MADE BY ZEISS





#### Manufacturers

KSK 150 FC, Kolposkop E and S100 / OPML pico from Carl Zeiss Meditec AG  
ZEISS light microscopes from Carl Zeiss Microscopy GmbH

#### Carl Zeiss Meditec AG

Goeschwitzer Strasse 51–52  
07745 Jena  
Germany  
[www.zeiss.com/gyn](http://www.zeiss.com/gyn)  
<http://www.zeiss.com/med/contacts>

#### Carl Zeiss Microscopy GmbH

Koenigsalle 9–12  
37081 Goettingen,  
Germany  
[www.zeiss.com/microscopy](http://www.zeiss.com/microscopy)  
[microscopy@zeiss.com](mailto:microscopy@zeiss.com)

**EN\_30\_010\_0139III SUR.5129 Rev C** Printed in Germany AW-CZ-VII/2015 Pto

The contents of the brochure may differ from the current status of approval of the product in your country. Please contact our regional representative for more information. Subject to change in design and scope of delivery and as a result of ongoing technical development. OPML, Varioskop and MEDIALINK are registered trademarks of Carl Zeiss Meditec AG. FlexioStill und FlexioMotion are trademarks of Carl Zeiss Meditec AG. Printed on elemental chlorine-free bleached paper.  
© Carl Zeiss Meditec AG, 2015. All copyrights reserved.